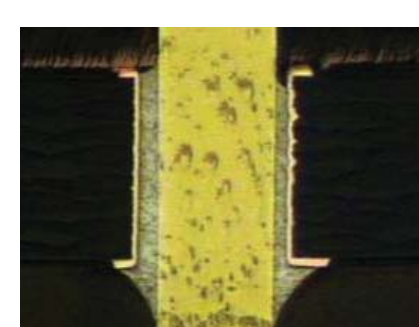
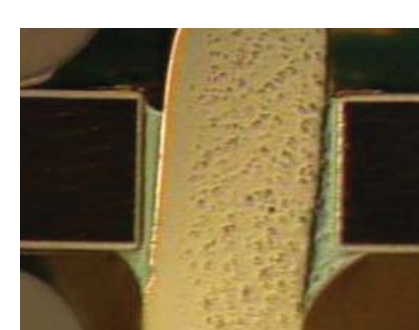
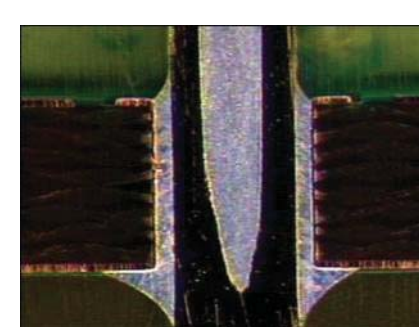


# MS2™

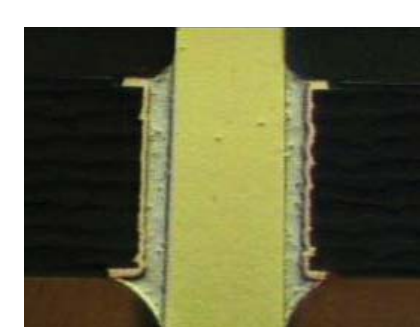
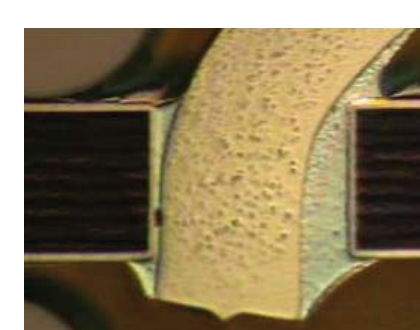
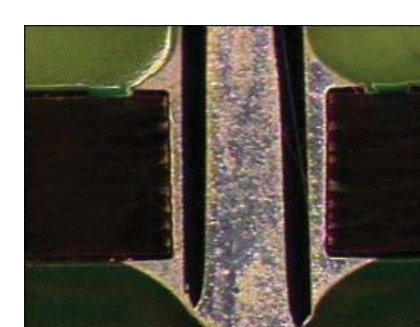
## Molten Solder Surfactant

**“The conclusion that can be drawn . . . is that the samples with MS2 have hole fill that is as good or better than without MS2.”**

**—Kola Akinade, Ph.D.  
Manager, Material Science and Engineering  
Scientific-Atlanta**



Standard Sn/Pb  
process



Standard Sn/Pb  
process with MS2™

Photos courtesy of  
Scientific-Atlanta

**Significant reliability testing, including SIR, Wetting and Environmental, has been undertaken at various test labs (Engent, Foresite, STI, University of Toronto and others) and at beta and production sites.**

**All testing to date shows that MS2™ produces no detrimental effects to the assembly.**

**PK**  
M · E · T · A · L

*Manufacturer of Premium Solders & Soldering Chemicals*